

Elen3000 Chapter 1 figs

Alan Robert Clark

April 27, 2022

Note that the source code for the figs can be seen by clicking the pic. You will need to use your Browser's BACK button to return to this page.

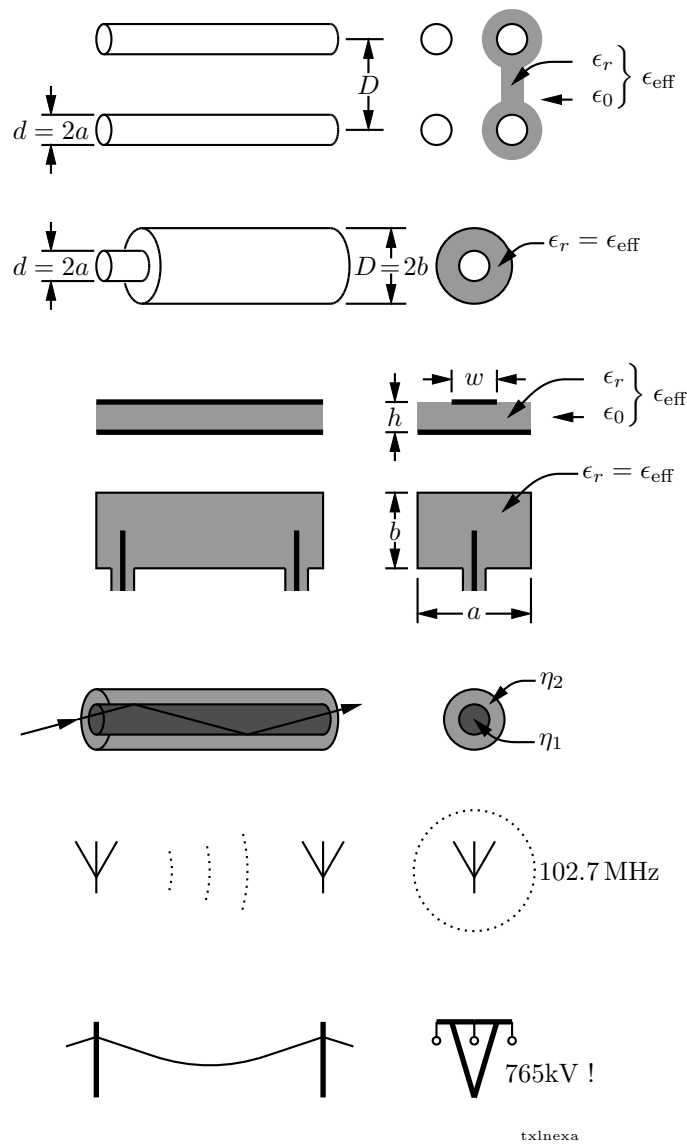


Figure 1: Common transmission lines

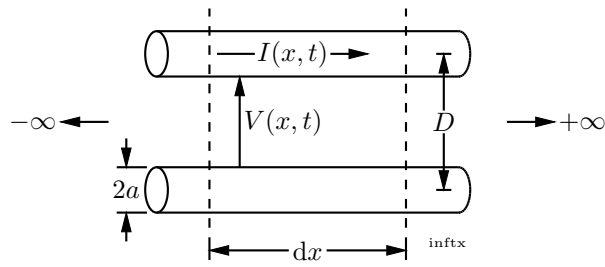


Figure 2: The infinite, uniform transmission line

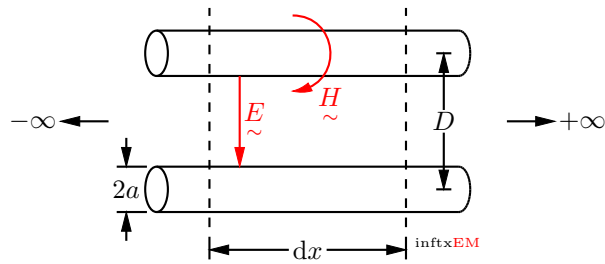


Figure 3: The infinite, uniform transmission line, EM perspective

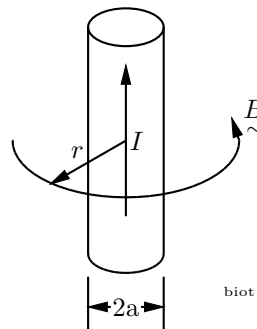


Figure 4: Magnetic Flux Density at a point r from a current carrying wire

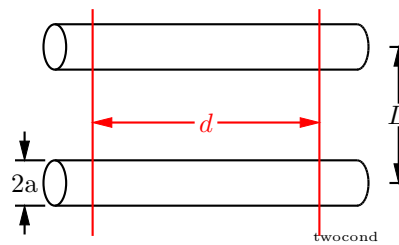


Figure 5: Two Conductors & Flux Linkage Λ

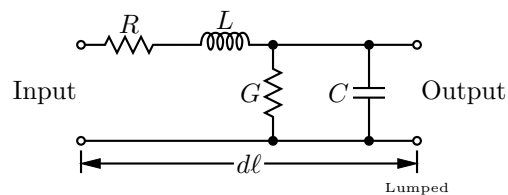


Figure 6: The Lumpy, or lumped model of the infinite transmission line

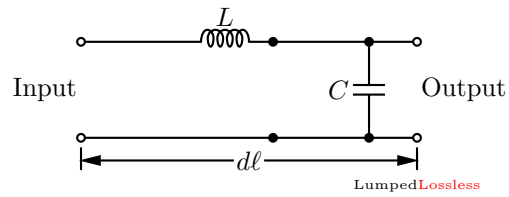


Figure 7: The Lumpy, or lumped model of the infinite transmission line, Lossless

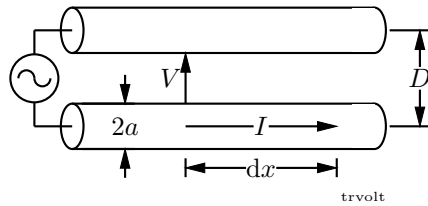


Figure 8: The voltage developed along an elemental distance dx of an infinitely long tr line.

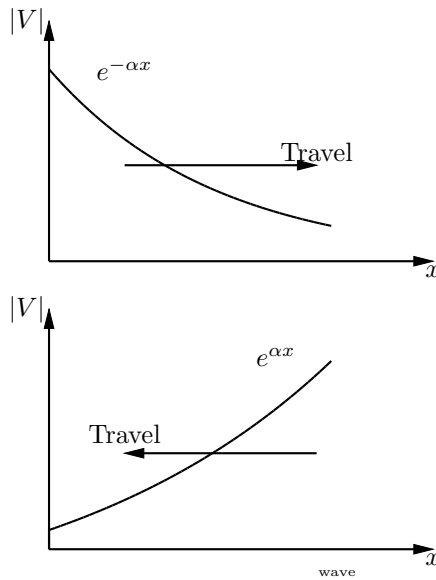


Figure 9: wave

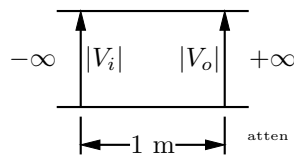


Figure 10: atten

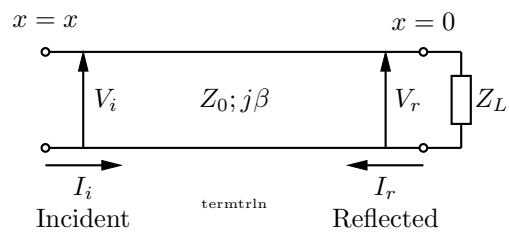


Figure 11: A terminated, uniform two-wire transmission line

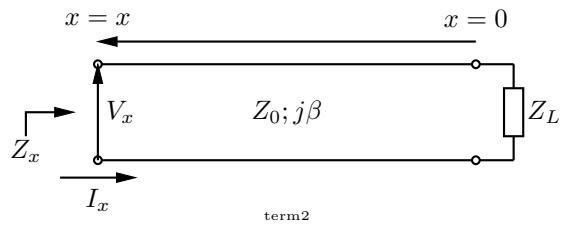


Figure 12: Uniform, Terminated Line

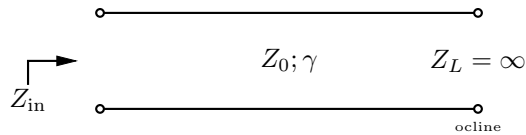


Figure 13: Open Circuited transmission line

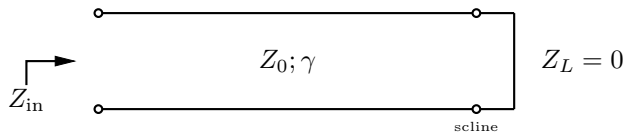


Figure 14: Short Circuited transmission line

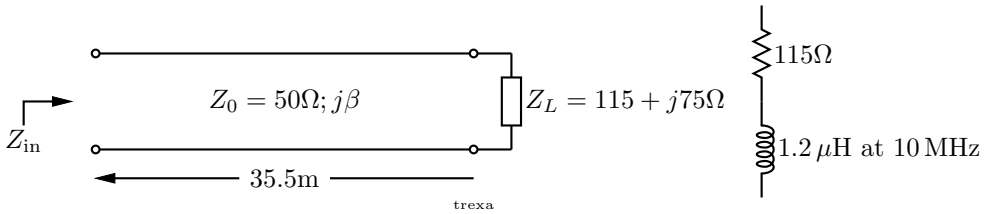


Figure 15: Transmission line example

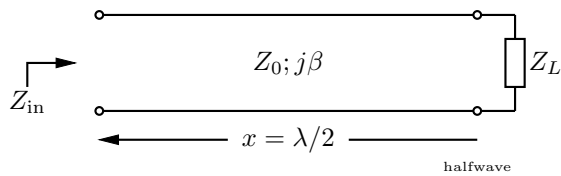


Figure 16: A half wavelength long transmission line

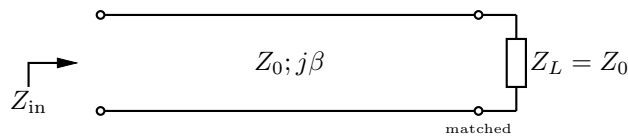


Figure 17: Load Impedance matched to the characteristic impedance

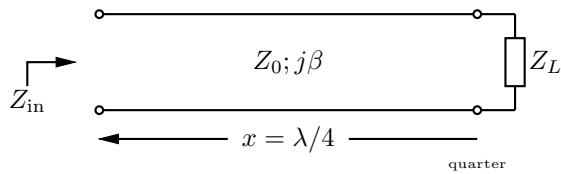


Figure 18: A quarter wavelength long transmission line

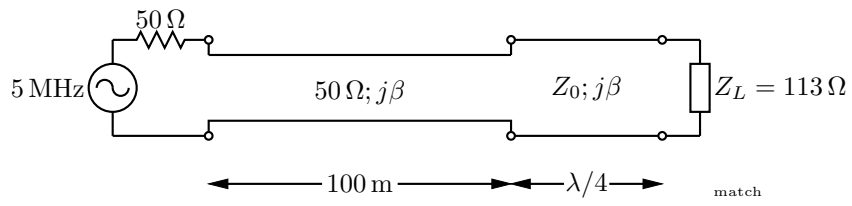


Figure 19: Design of a matching section

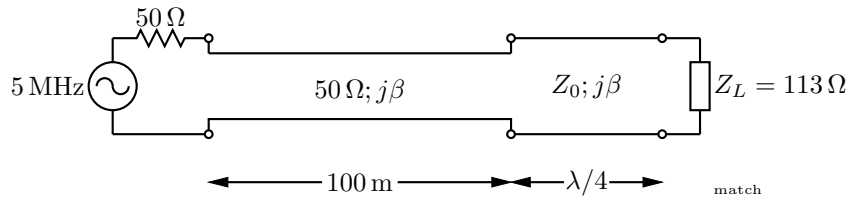


Figure 20: match

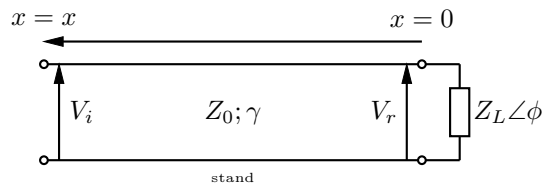


Figure 21: stand

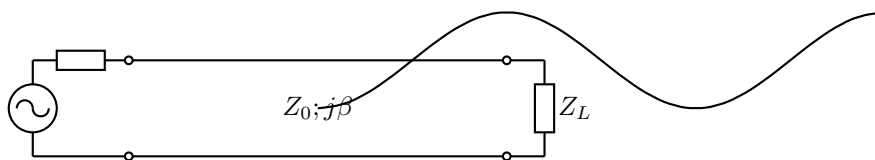


Figure 22: VoltTr